



The Global Language of Business

DCH Logistics Company Limited 大昌行物流有限公司

Adding Customer Values with Traceability 可追溯性為服務增值



Background 背景

DCH Logistics provides one-stop professional logistics services to its international branding clients in Hong Kong, Macau and mainland China, including supply chain management, material sourcing, modern warehousing system, cold chain management (air-conditioned, chilled and frozen), repackaging, value-added services (VAS) freight forwarding, goods consolidation and distribution. In particular, DCH Logistics is committed to provide professional and diversified solutions for one-stop logistics supply chain, so as to reduce the client's operation cost and enhance their market competitiveness.

大昌行物流有限公司為香港、澳門及內地的國際品牌提供一站式專業物流服務，包括供應鏈管理、原料採購、現代倉存系統、冷凍鏈管理（包括空調、冰鮮、冷藏）、重新包裝、增值服務、貨運代理、貨品加固及批發等。大昌行特別專注於為一站式物流供應鏈提供專業而多元化的解決方案，藉此為客戶節省營運成本，並提升其市場競爭力。

Challenges 挑戰

Over the years, increasing number food safety incidents alert the importance of efficient food product recall and global food traceability at origin to ensure consumer safety. Therefore, DCH Logistics adopts GS1 Global Traceability Standard (GTS) and RFID-based Cold Chain Management Solutions in their food supply chain services to enhance global food traceability and supply chain visibility.

過去數年，全球食品安全事故或危機事件出現上升趨勢，突顯了產品回收效率及全球食品源頭可追溯性的重要性，只有做好這兩方面，方能確保香港的最終消費者可以享用安全而優質的食物。有見及此，大昌行物流決定應用GS1全球食品可追溯性標準(GTS)以及無線射頻識別(RFID)為本的冷凍鏈管理方案，以提升全球食品供應鏈的可追溯性及透明度。

Business solutions 解決方案

With the mission to ensure food safety throughout the entire end-to-end logistics from source to client, DCH Logistics extends the traceability application to its upstream suppliers. GTS is firstly deployed in the frozen fish category to identify the critical product processes points. On supplier side, unique GS1 codes like GTIN and SSCC are assigned to each packaged product and logistics units. All this outbound logistics unit information and shipment data will be shared to the relevant parties through a track and trace platform, ezTRACK, built on the Electronic Product Code Information System (EPCIS) visibility standard. DCH Logistics, as a logistics provider, can enjoy accurate traceability information from the platform and speed up the order processing upon product arrival.



大昌行一站式的物流服務支持集團整個食品供應鏈的第三方物流管理。





To add more values to clients, DCH Logistics also adapts a RFID-based cold chain management solution tailored made to the temperature sensitive food products, such as confectionery. With the RFID sensors installed, temperature and humidity can be continuously monitored during each critical logistics point, including storage, packaging dispatching and delivered alongside the entire supply chain till client's receipt confirmation. The monitored information can be constantly accessed through ezTRACK.

大昌行物流把可追溯性措施擴展至它的上游供應商，以確保整個供應鏈的食品安全。它採用了GTS，藉此識別大昌行物流各重大的追蹤及追溯點——從法國的魚類供應商到香港的消費者。每件包裝產品均獲編配全球貿易貨品編碼(GTIN)，而每個物流單位均以貨運容器序號(SSCC)識別。所有這些出境資訊，包括GTIN、SSCC和貨物數據均上載到以產品電子代碼訊息服務(EPCIS)為基礎的追蹤及追溯平台「縱橫網」。大昌行物流作為物流供應商，可從EPCIS平台取得準確資訊，以加快產品抵達目的地後的流程。

為進一步提升客戶服務，大昌行物流對溫度敏感的產品採用了RFID冷凍鏈管理方案。糖果類是其中一種需要冷凍鏈的產品。在每一個重要的可追溯流程，包括儲存、包裝和產品配送，溫度和濕度均受到持續監察。每個物流單位均貼上了以RFID為基礎的冷凍鏈標籤，並隨供應鏈一同運送，直到客戶確認接收貨品。這些溫度和濕度資訊均可通過「縱橫網」持續檢視和管理。

Key Benefits

Pioneer Positioning:

DCH is a pioneer of value-adding logistics service provider by serving safe and traceable products to its clients

Trading Partner Visibility:

Enhance end-to-end supply chain visibility to upstream and downstream trading partners

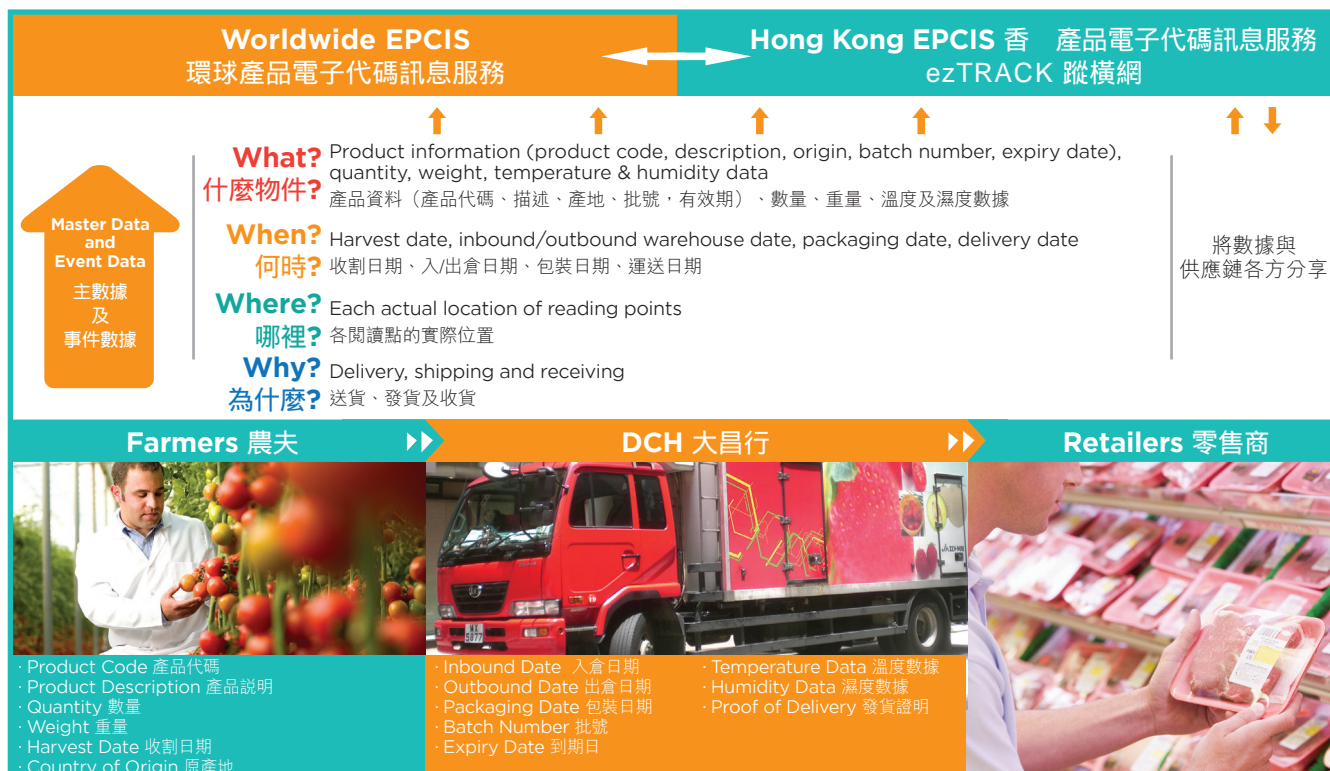
效益

行業先驅的定位：

大昌行是領先的增值物流服務供應商，為客戶提供安全和可追溯的產品

貿易夥伴間的透明度：

加強上下游貿易夥伴點對點的供應鏈可視性



Please contact us for more information 請聯絡我們了解詳情:

GS1 Hong Kong 香 貨品編碼協會

香港灣仔告士打道160號海外信託銀行大廈22樓
22/F, OTB Building, 160 Gloucester Road, Wanchai, Hong Kong
T (852) 2861 2819 | F (852) 2861 2423 | E info@gs1hk.org
www.gs1hk.org

GS1 is a registered trademark of GS1 AISBL.
All contents copyright © GS1 Hong Kong 2015