



The Global Language of Business

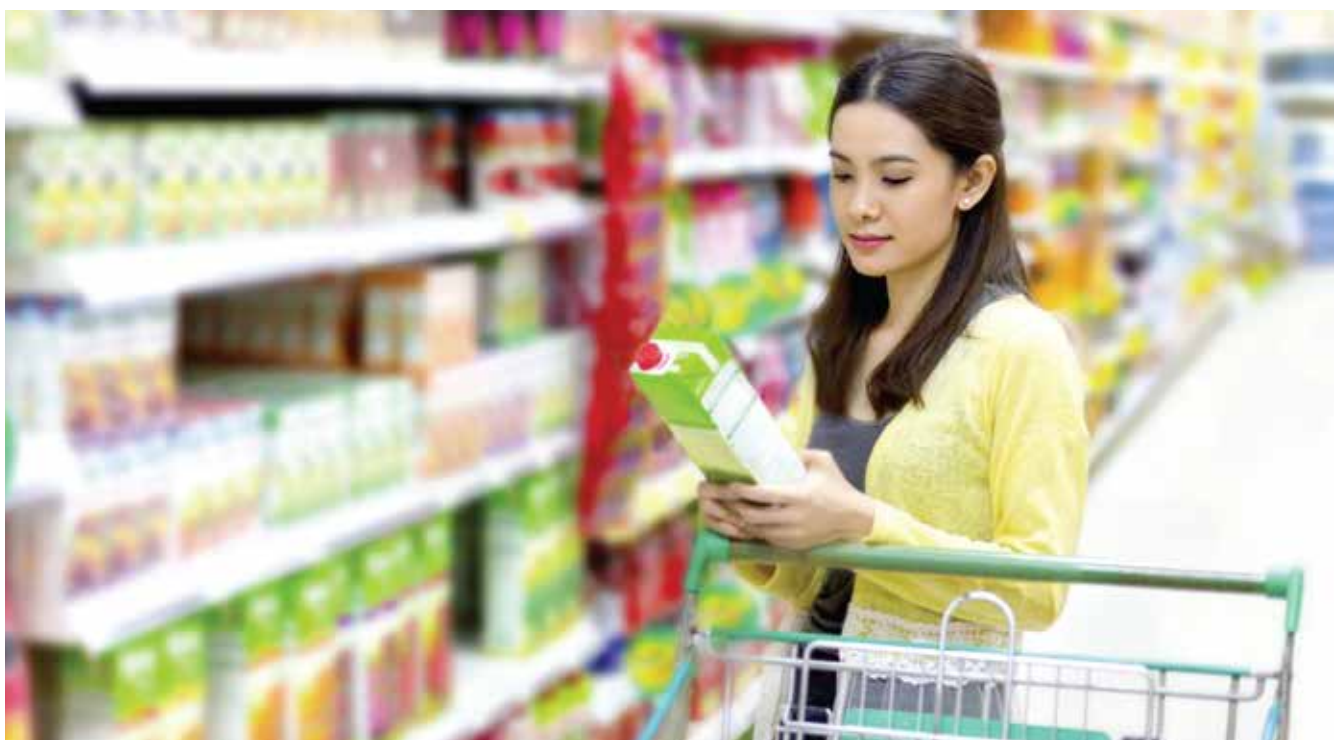


優質食品源頭追蹤計劃 2020

Quality Food Traceability Scheme 2020

根據全球追溯標準

Accordance with Global Traceability Standard





引言 Introduction

GS1是一個中立及非牟利的國際組織，並獲ISO認可，一直致力設計及推行全球標準，務求讓供應鏈更加高效、透明及安全。GS1全球追溯標準（GTS）符合多項國際標準，不論食品生產過程中牽涉多少不同企業和國家，食品追溯系統都可以全球通行。

As a neutral, not-for-profit and ISO endorsed organisation, GS1 has dedicated ourselves to the design and implementation of global standards, for more efficient, visible and safer supply chains. GS1 Global Traceability Standard (GTS), which complies with multiple international standards, makes food traceability systems possible on a global scale - regardless of the number of companies or borders crossed in the food production process.

根據研究機構Aberdeen Group發表的《Aberdeen's Food Safety and Traceability Report》，全球表現最佳食品企業中，六成已經採用GS1標準。當出現懷疑食品安全事故時，以全球追溯標準根據的系統可以確保即時取得準確的產品資訊和迅速回收問題貨品。系統亦有助產品質量保證及準確控制存貨，從而達到保障消費者的健康及安全的最終目標。

Aberdeen's Food Safety and Traceability Report* states that the best performing food companies have 60% adoption of GS1 standards. In case of suspected food safety issues, the GTS enabled system ensures immediate access to accurate product information and swift recalls of products. It also facilitates quality assurance and accurate inventory control, with the ultimate goal to ensure consumer health and safety.



宗旨 Objective

近年的食物安全事故令市民大眾對食物安全日益關注，端到端的食物追溯規範成為食品安全管理不可或缺甚至關鍵的因素。為了致力推動企業實踐食品追溯，GS1 Hong Kong由2015年開始均每年舉辦「優質食品源頭追蹤計劃」。計劃旨在嘉許本地企業於食品追溯獲得卓越表現，包括透過有效地採用國際標準及監控食品管理系統技術，以達到食品追溯的要求和提供優質及安全食品予消費者的最終目標。

The outbreaks of food incidents in recent years raised concerns on food safety. End-to-end food traceability has become an essential element in food safety management. To encourage enterprises to adopt food traceability practices, GS1 Hong Kong launches the "Quality Food Traceability Scheme" annually since 2015. It aims to improve the visibility of food supply chain and enhance enterprises' ability in traceability, hence to enhance consumer trust in local food industry.



專業審計 Professional Audit

審計工作由香港貨品編碼協會負責。

Audit will be performed by GS1 Hong Kong.



「優質食品源頭追蹤計劃2019」頒獎典禮 「Quality Food Traceability Scheme 2019」 Award Ceremony



審計準則 Assessment Criteria

評審準則主要根據「全球追溯標準」(GTS)進行，並且參照獲全球食品安全倡議組織(GFSI)認可的食品安全標準及其他國際標準，包括BRC全球食品安全標準、IFS國際食品標準認證、SQF(食品安全與質量)、Global G.A.P、ISO 22005、ISO 9001、HACCP認證等。12個評審準則將涵蓋四個關鍵重點，包括應用範圍、程序、資源管理和監管。

The assessment criteria are mainly evaluated in accordance with GTS, with cross reference to GFSI recognised food safety scheme and other international standards such as BRC (British Retail Consortium) Global Standard - Food, IFS (International Featured Standard) - Food, SQF (Safe Quality Food), Global G.A.P, ISO 22005, ISO 9001, HACCP, etc. The 12 audit criteria are under 4 key focus perspectives on scope, procedures, resource management and supervisory control.



評分準則 Scoring System

評分將根據四大準則進行，主要包括 (i)「全球追溯標準」的達標程度、(ii) GFSI食品安全認證及其他國際標準認證、(iii) 培訓及(iv) 對外商業夥伴的追溯覆蓋面。

The scoring system comprises 4 major components, including (i) GTS compliance, (ii) GFSI food safety certificate and other international standards recognition, (iii) Training and (iv) Traceability coverage extension to external business partners.

總分 Total Score	i 全球追溯標準 GTS	ii GFSI食品安全認證及其他國際標準認證 GFSI recognized scheme and other international standards recognition	iii 培訓 Training	iv 覆蓋面 Coverage
(0-100分points)	70%	15%	10%	5%
鑽石Diamond	涵蓋4大重點及12項準則	· IFS · FSSC22000 · SQF · BRC	完成相關培訓課程	可追溯規範延伸至上游或下游合作夥伴
金Gold	Cover 4 focus perspectives and 12 criteria	· Global G.A.P. · ISO 22000 · HACCP · ISO9000	Complete relevant training courses	Extend traceability practices to upstream / downstream business partners
銀Silver				



高效回應消費者指標 ECR Index

為了提高企業處理事故之速度和能力，本計劃同時加設了另一個元素—高效回應消費者指標。指標主要參照全球高效消費者響應指標 (Global ECR) 製訂，讓企業根據關鍵評分指標 (KPI)，對供應鏈執行效率進行更深一層的指導和評析，以了解公司內部和合作夥伴的ECR執行能力。指標內容將根據四個準則進行。

In order to improve the speed and capability of companies to deal with incidents, the scheme has added a ECR Index. The Index is developed according to the Global Efficient Consumer Response (Global ECR) which provides companies with a deeper evaluation on the capabilities according to the KPI while the implementation supply chain's efficiency of ECR. The Index comprises four focus perspectives for the company.

指標 Index	準則 Guidelines
★ ★ ★	涵蓋4大項目及4項準則 Cover 4 focus perspectives and 4 criteria
★ ★	
★	



參與機構可享權益 Entitlements

- ☆ 可獲享一次性由專業評審團提供的評審服務
Receive an appraisal from external perspective by a team of professional auditors
- ☆ 可獲取一份全面的評估報告，以協助企業維持最新的管理系統和建立更完善的食物追溯管理系統的路線圖
Receive a full report to develop roadmap for better food traceability management and to maintain the most updated system for companies who are constantly looking for improvement
- ☆ 可獲授權於相關的市場推廣資料上使用「優質食品源頭追蹤計劃2020」嘉許標誌
Entitled to use the 「Quality Food Traceability Scheme 2020」 logo in marketing materials
- ☆ 報導機會
Exposure opportunities

QUALITY
FOOD
Traceability
Scheme



計劃里程碑 Milestone



報名資格 Eligibility

參賽企業須於香港或澳門食品業營運達一年或以上
Companies who have engaged in food business with over one year of operation in Hong Kong or Macau are eligible to apply.



報名費用 Application Fee

每份申請的報名費用為港幣一萬六千元正。請於遞交報名表後七日內以劃線支票繳付，支票抬頭請註明「GS1 Hong Kong Ltd」。支票背面請列明參加企業名稱、聯絡人姓名及電話，並註明「優質食品源頭追蹤計劃 2020」。

The fee for each application is HK\$16,000. Fees should be paid by crossed cheque made payable to "GS1 Hong Kong Ltd" within 7 days after form submission. Please write down the name of the participating company, contact person and telephone number at the back of the cheque with attention to "Quality Food Traceability Scheme 2020".



報名方法 Application

請填寫報名表格連同報名費以郵寄或親身遞交至香港貨品編碼協會。

Submit the signed application form with application fee by post or in person to GS1 Hong Kong.



香港貨品編碼協會 GS1 Hong Kong

香港灣仔告士打道160號海外信託銀行大廈22樓

22/F, OTB Building, 160 Gloucester Road,
Wanchai, Hong Kong



2019年得獎企業心聲 Voice from 2019 Winners

鑽石企業 Diamond Enterprise

雀巢香港有限公司 Nestlé Hong Kong Limited

很榮幸雀巢香港有限公司首次參加GS1 HK優質食品源頭追蹤計劃，就獲得鑽石企業獎。參加了這個計劃後，讓我們對內部系統的審核更加嚴謹，亦在努力優化內部程序，同時都提升了我們的公司形象。

This is the first year for Nestlé Co., Ltd to join GS1 HK's Quality Food Traceability Scheme, and we are honored to have won the Diamond Enterprise Award. After participating in the Scheme, we have undergone stringent internal assessments, aiming to optimize internal workflow, and at the same time, enhance our company image.

總經理鍾美玲 May Chung, General Manager



金獎企業 Gold Enterprise

唐順興家禽(香港)有限公司 Tong Shun Hing Poultry (HK) Co. Ltd.

作為香港和澳門主要冰鮮家禽入口商，我們很高興和GS1 HK以及餐飲業界各優秀企業擁有相同經營理念，就是重視食品安全。由GS1 HK推出的認證，自然可帶給消費者一定的信心，為自己和家人的健康把關。

As the main importer for chilled poultry in Hong Kong and Macau, we are glad to share the same business philosophy with GS1 HK and other outstanding companies in the F&B industry, which is our focus on food safety. The certification that issued by GS1 HK is a vote of confidence for consumer, serving as a gatekeeper for health and wellness of people and their family.

總經理唐振峰 Patrick Tong, General Manager



銀獎企業 Silver Enterprise

新食品時代有限公司 New Food Era Co. Ltd.

這個計劃對我有許多正面影響，讓我們了解到食品行業內部是怎樣去操作、怎樣去追蹤、如何有系統地追蹤食品來源等。我們從計劃中領略到很多，也證明我們一直的付出和努力是有效，也有改善進步的空間。

This Scheme has a lot of positive impact on us, letting us know the operation of the food industry, the works on traceability, and the ways to systematically trace the food origin. We have learnt a lot from the Scheme, and it also validates the values of our substantial efforts. Of course it shows us there are rooms for improvement too.

創辦人王威 Marco Wong, Co-Founder



「優質食品源頭追蹤計劃2019」得獎企業 (按公司名稱字母順序排列)

Participating Enterprises in Quality Food Traceability Scheme 2019 (in alphabetic order by company name)

鑽石企業Diamond Award Enterprise



金獎企業Gold Award Enterprise



銀獎企業Silver Award Enterprise



支持機構 Supporting Organisations



GS1 Hong Kong
22/F, OTB Building, 160 Gloucester Road, Wanchai, Hong Kong
Tel: +852 2861 2819 Fax: +852 2861 2423 Email: food@gs1hk.org

掃描了解更多

